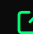
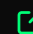
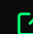
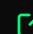
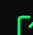
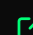


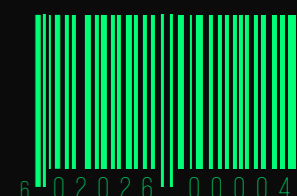
BEST VIEWED IN SPREAD

CREATIVE DESIGNER

PORTFOLIO

GUILLAUME NUNES

linkedin_ 
instagram_ 
website_ 
email_ 
whatsapp_ 
calendly_ 



6 02026 00004 0



CONTENTS

2024

Creative Designer

Barcelona · Spain

- Design of immersive experiences and themed entertainment projects
- Creative direction for narrative and spatial environments
- Development of visual worlds, attractions and themed spaces
- 3D production, spatial storytelling and art direction
- Integration of technical, operational and budget constraints into creative concepts

2024
2016

Founder · Technical Designer · Architectural Facades & Decorative Structures

Paris · France

- Specialized in complex facades and architectural decorative structures
- Work on historical facades, moldings, ornamental details and custom elements
- Production of detailed technical documentation and facade layout drawings
- Development of custom construction and fabrication solutions
- Quantity surveying, execution planning and production supervision
- Collaboration on themed environments and immersive entertainment-related projects

2016
2010

Construction Project Manager

Construction Company · Geneva, Switzerland

- Technical and financial management of construction projects
- Quantity surveying, cost calculations and operational follow-up
- Production of technical drawings and execution documents
- Coordination between contractors and production teams
- Development of a strong feasibility-oriented design approach

2010
2003

Project Manager · Quantity Surveyor · Construction Cost Estimator

Construction Company · France

- Technical and financial studies for construction projects
- Quantity take-offs and budget estimations
- SketchUp modeling and project visualizations
- Preparation of technical documentation and project coordination
- Collaboration between design and on-site execution teams

■■■■■ FRENCH
 □□■■■ SPANISH
 □□□■■ ENGLISH

Ps Ae

Dn Pt

Sa Pr

Ai Ⓜ

Ⓝ Ⓡ

M Ⓟ

▲ Ⓢ



ABOUT
THEMED ENTERTAINMENT DESIGNER WITH OVER 20 YEARS OF EXPERIENCE BRIDGING CONSTRUCTION, TECHNICAL DEVELOPMENT AND IMMERSIVE STORYTELLING.
SPECIALIZED IN SPATIAL DESIGN THEMED ENVIRONMENTS AND BUILDABLE CREATIVE CONCEPTS. FOCUSED ON CREATING EMOTIONALLY ENGAGING WORLDS GROUNDED IN REAL-WORL FEASIBILITY.

woodsboro_inspired_by_the_original_scream_films

woodsboro_land_is_a_fully_immersive_horror_entertainment_concept_inspired_by_the_atmosphere_and_visual_identity_of_the_original_scream_films_through_themed_architecture_darkride_experience_live_entertainment_and_environmental_storytelling_the_project_explores_how_fear_and_cinematic_design_can_transform_a_cult_horror_universe_into_a_large_scale_destination_experience.





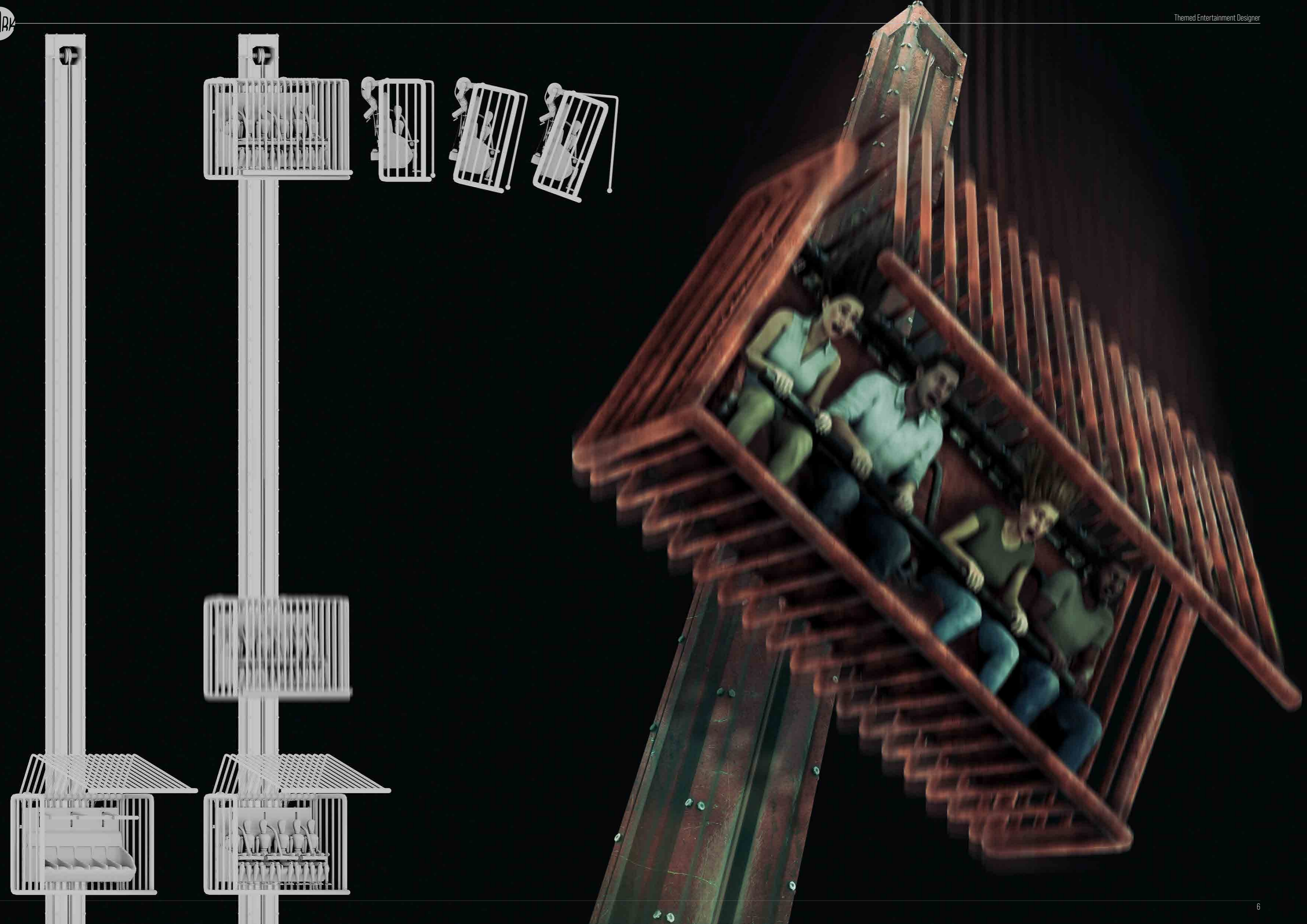














BRADLEY VIDEO

MCKENZIE & SON
 MASK FABRICATION
 QUALITY HORROR MASKS SINCE 1996

MCKENZIE & SON
 SINCE 1996
 WOODSBORO

BRADLEY VIDEO

- Bradley Burger
- Ghostface Burger
- Slasher Fries
- Popcorn Chicken
- Killer Milkshake
- Cinema Cola

A SCREAMING DELICACY

POP CORN

GHOSTFACE BURGER

WOODSBORO

Cafe Claude

POP CORN



WOODSBORO HIGH SCHOOL

NOW OPEN:
RESTAURANTS
& 4 SHOPS

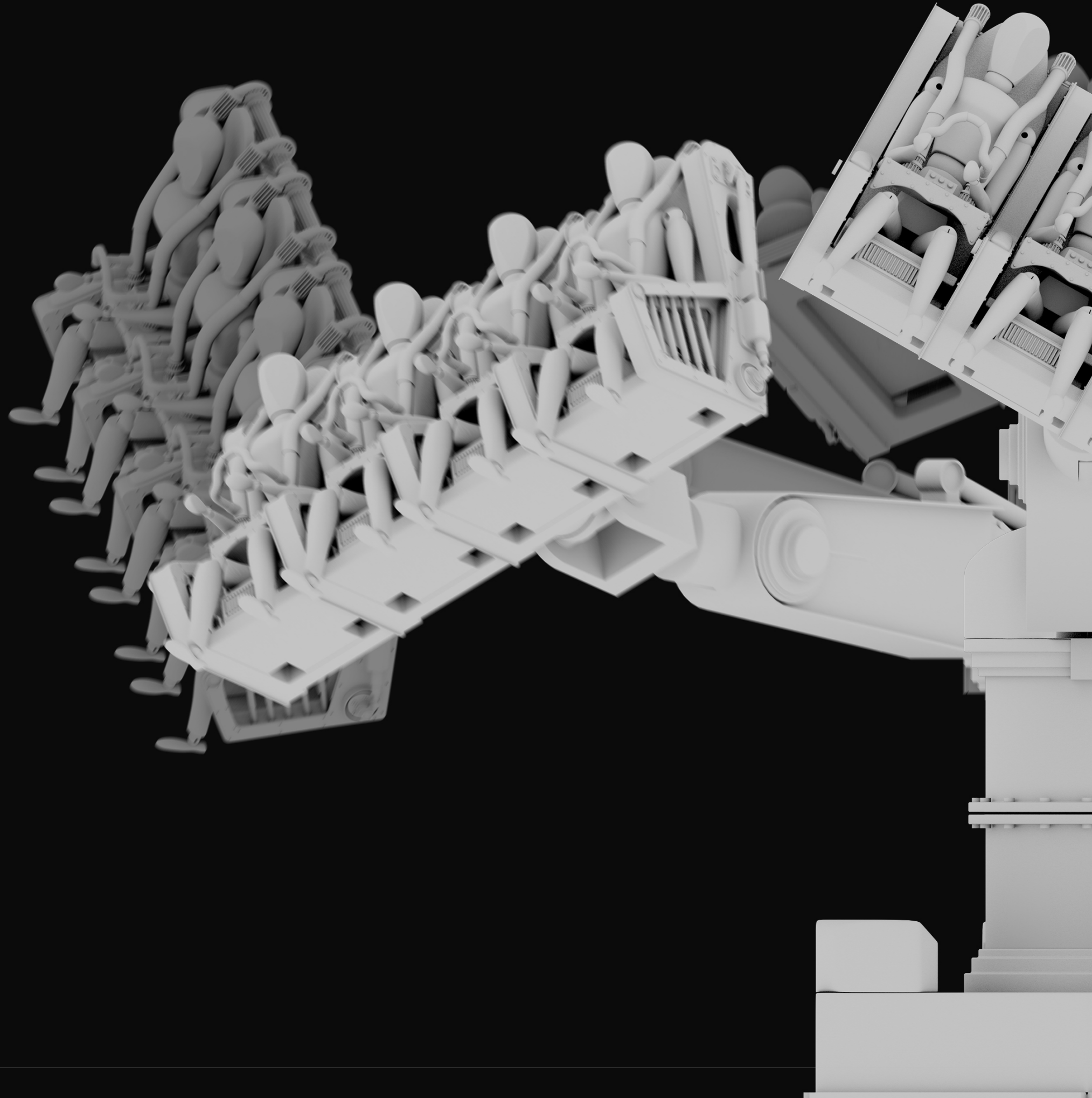
WOODSBORO
FEST

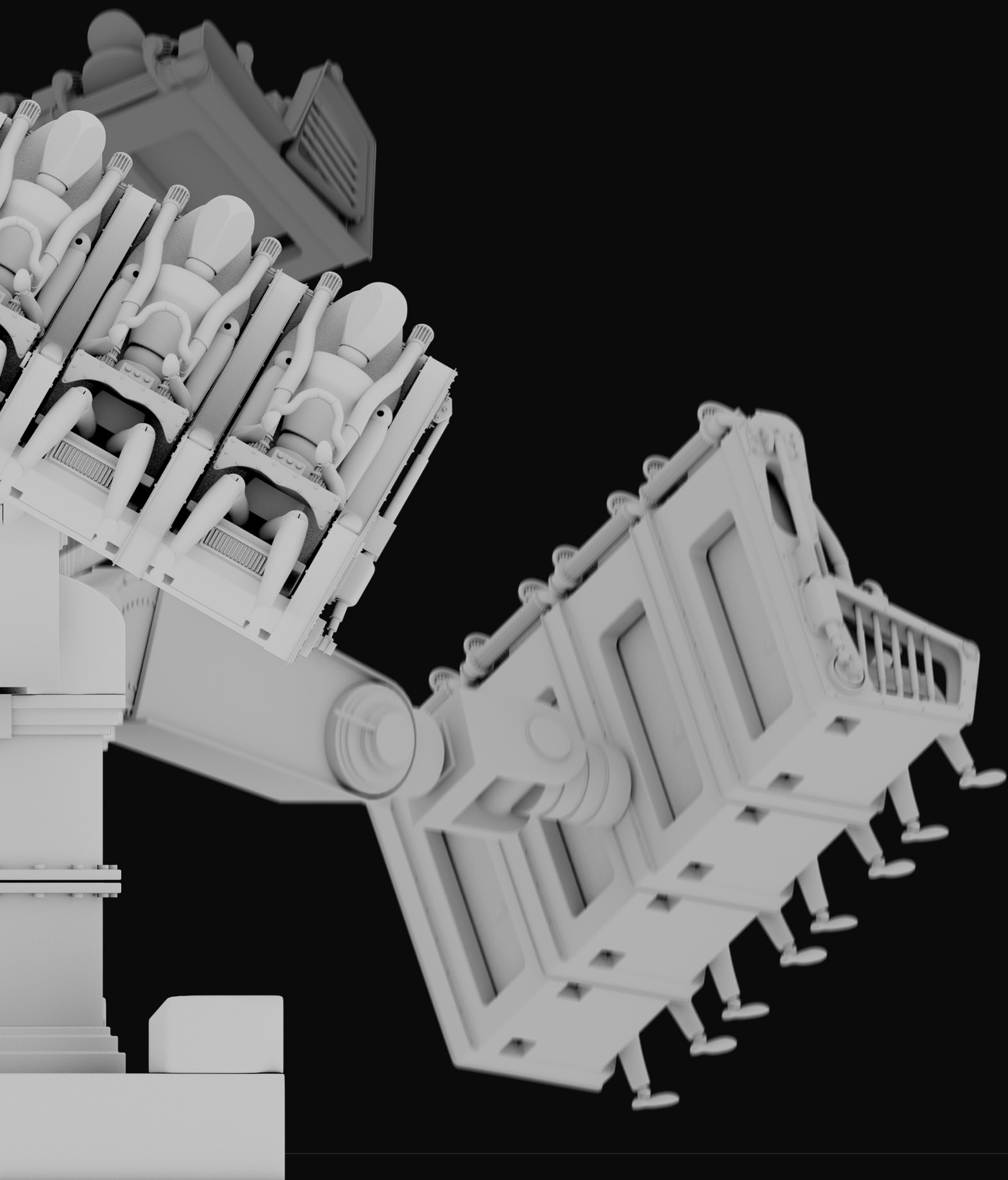
276

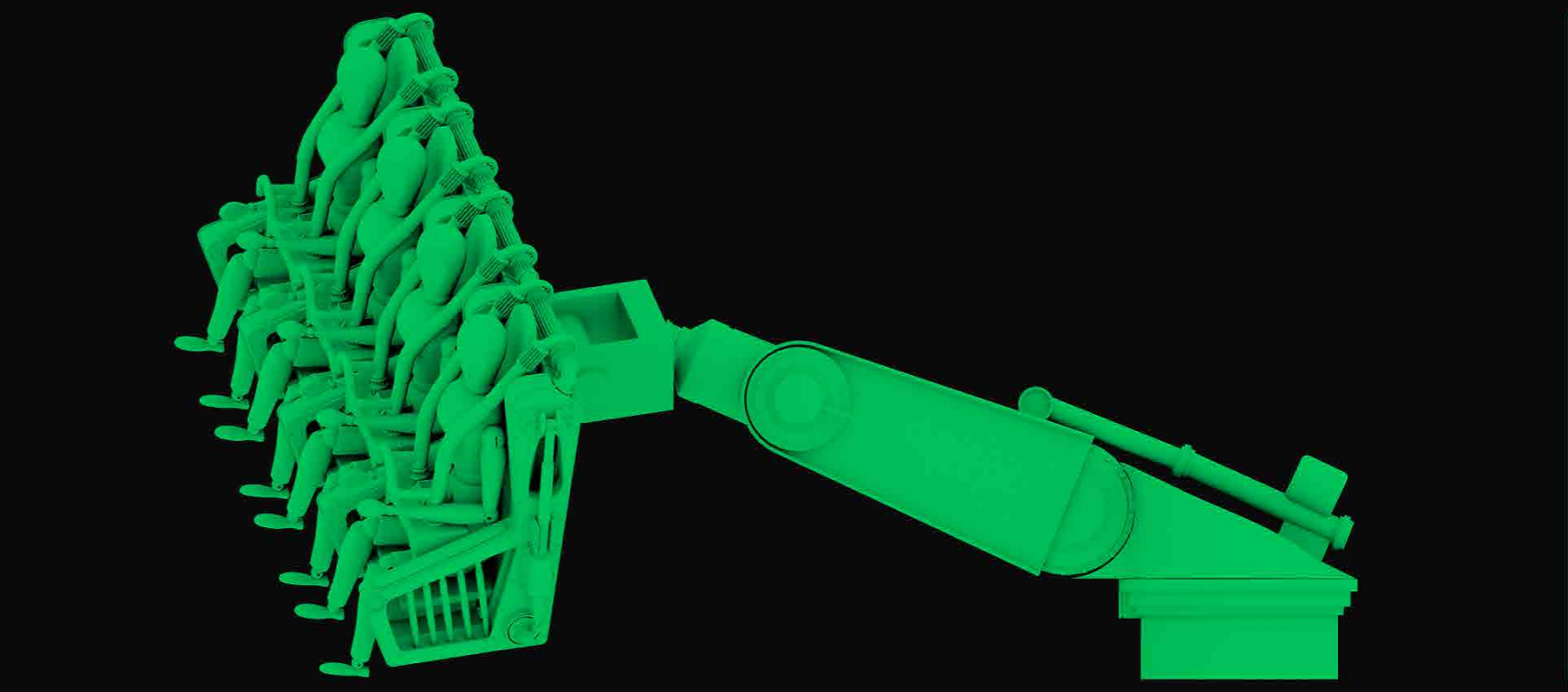
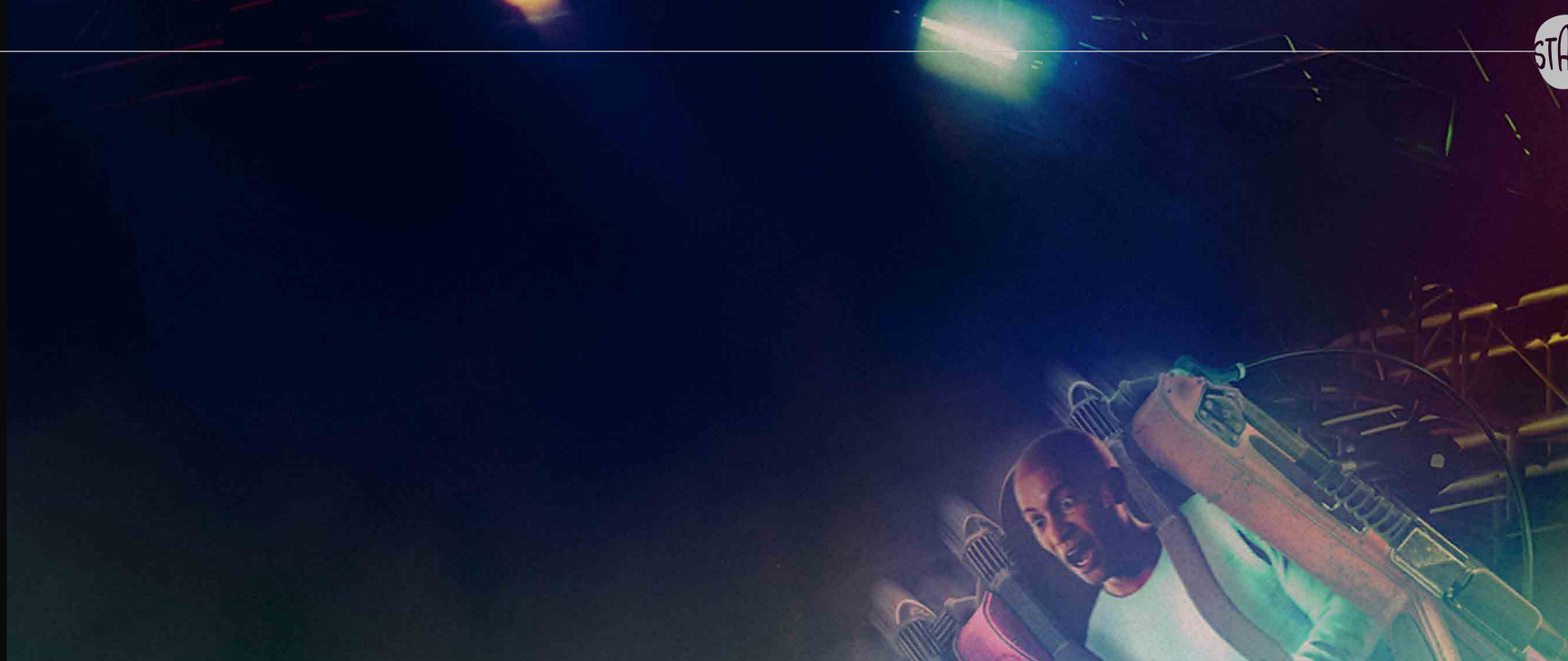
WOODSBORO

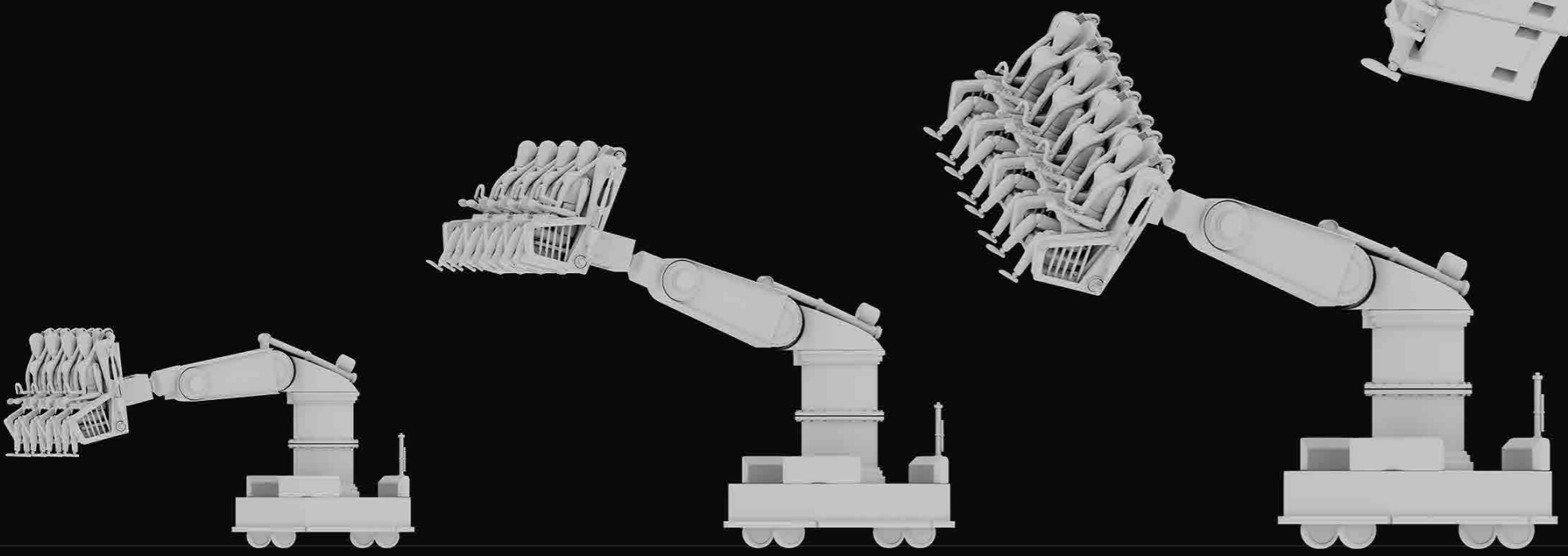
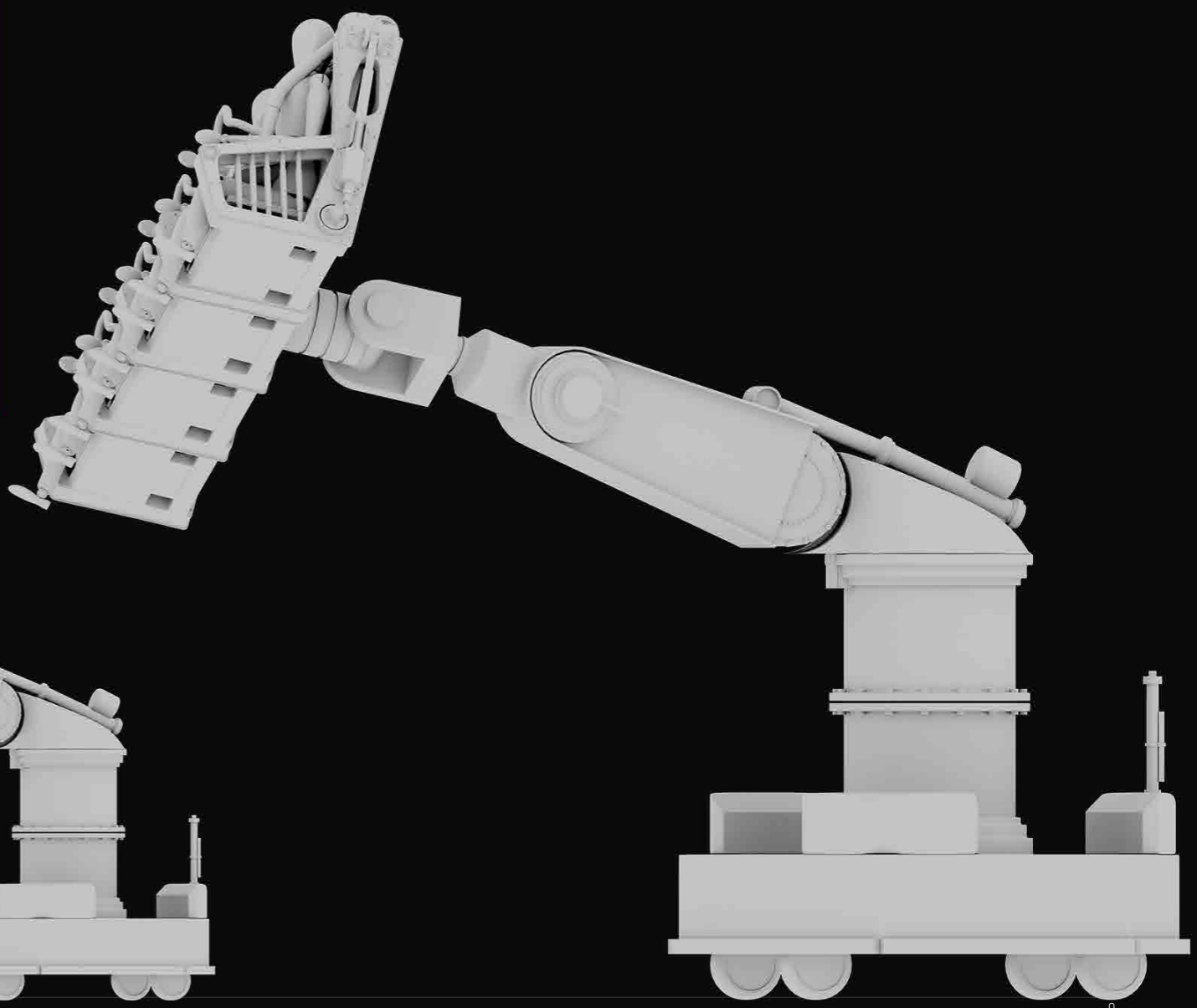
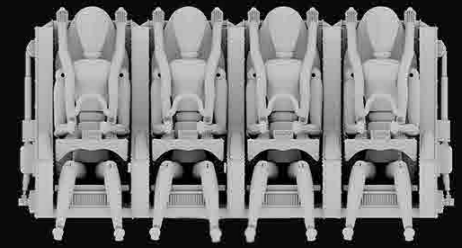
WOODSBORO
CLASSICS

WOODSBORO
CLASSICS







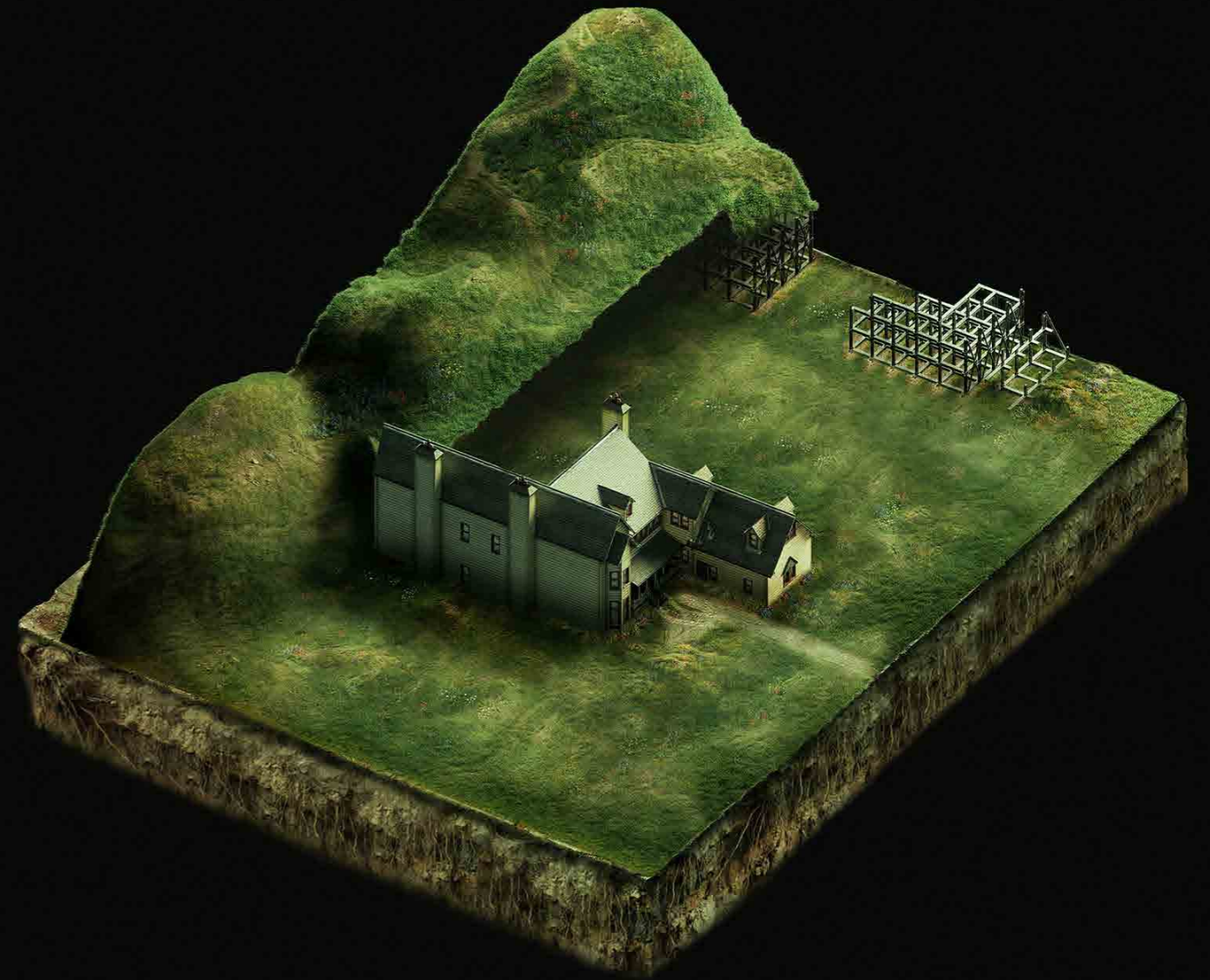
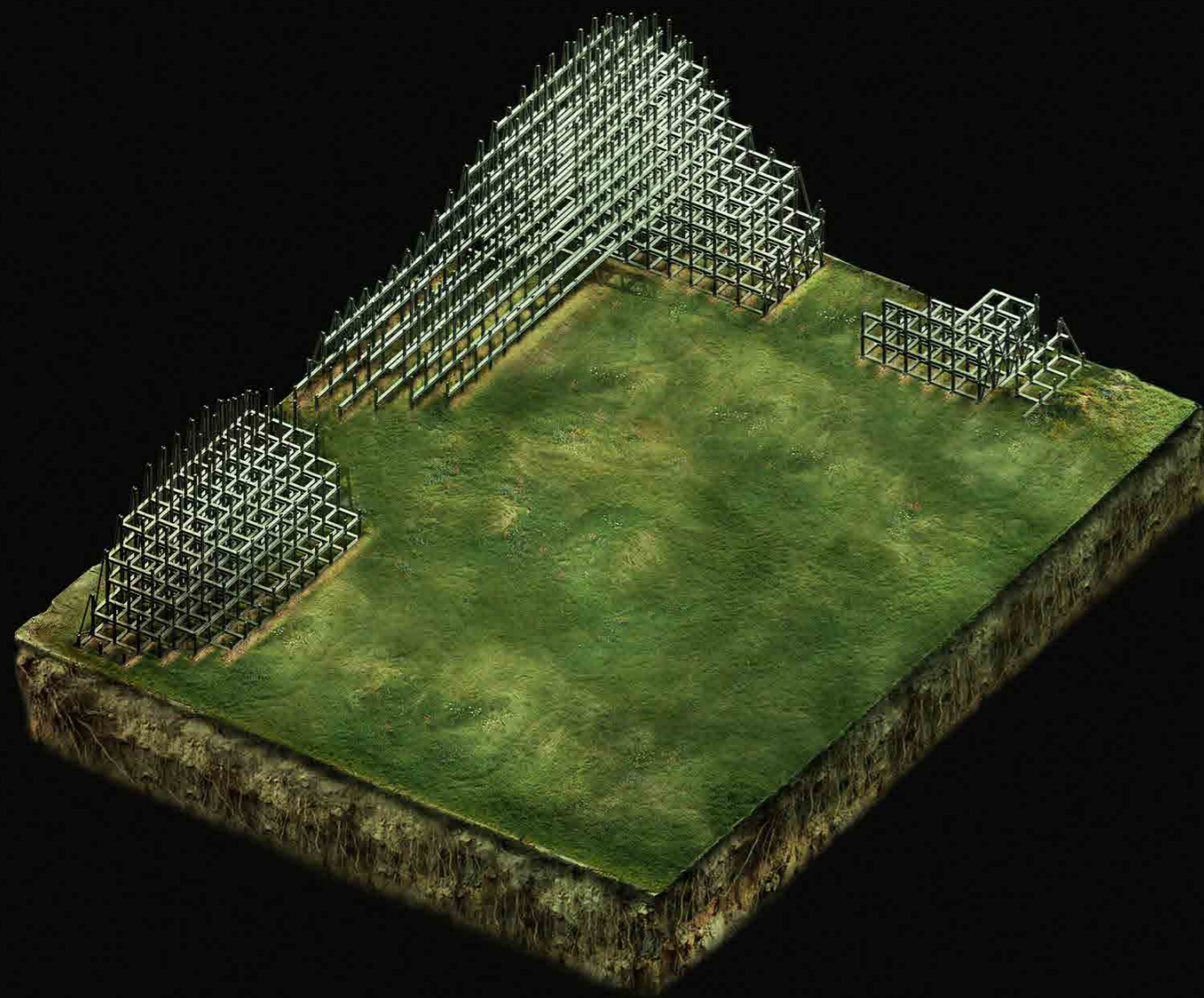


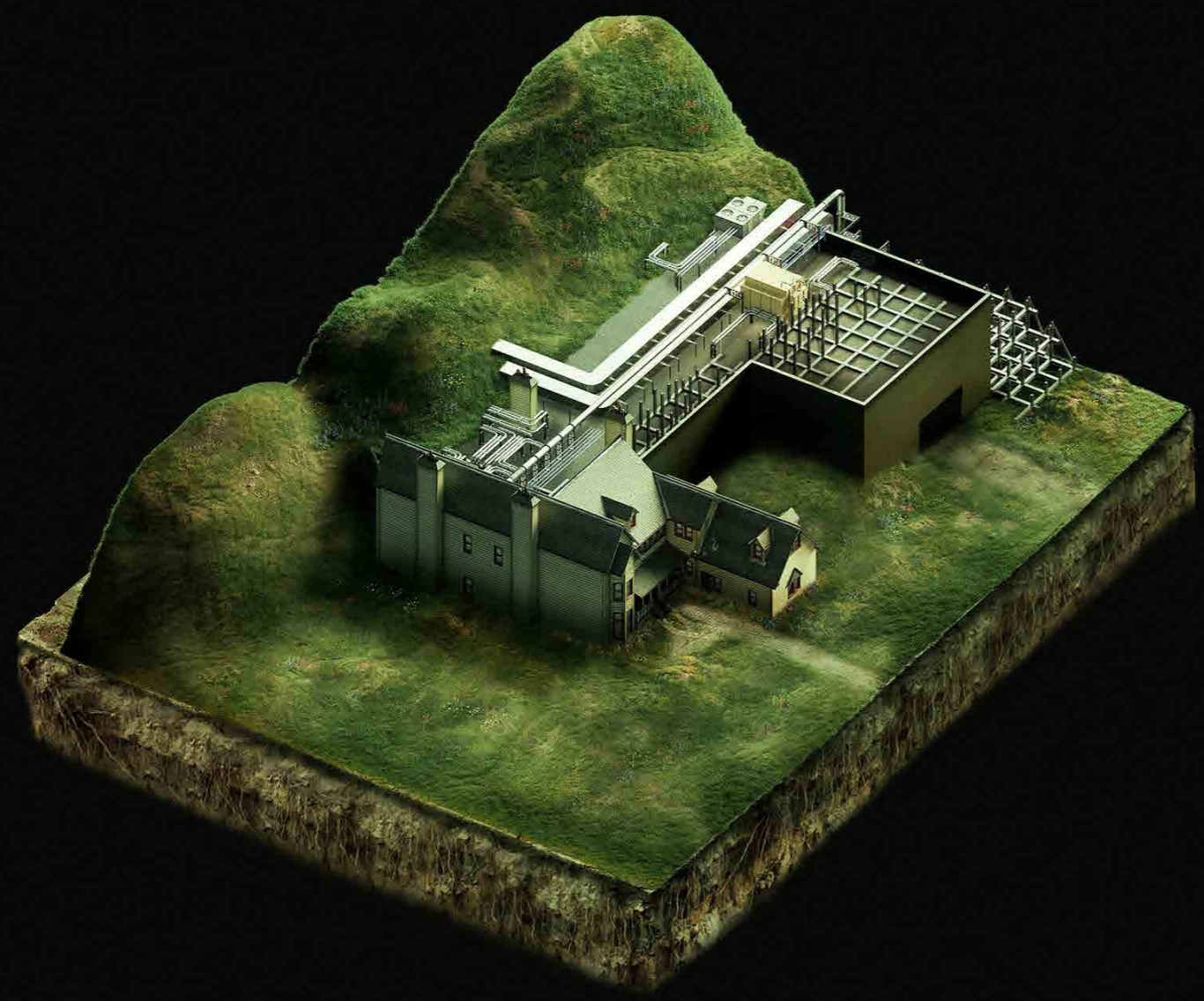




CONSTRUCTION PRINCIPLE

Scenic Mountain, Show Building and Macher House Facade Integration

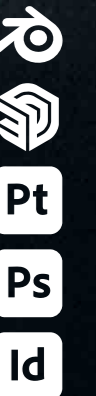


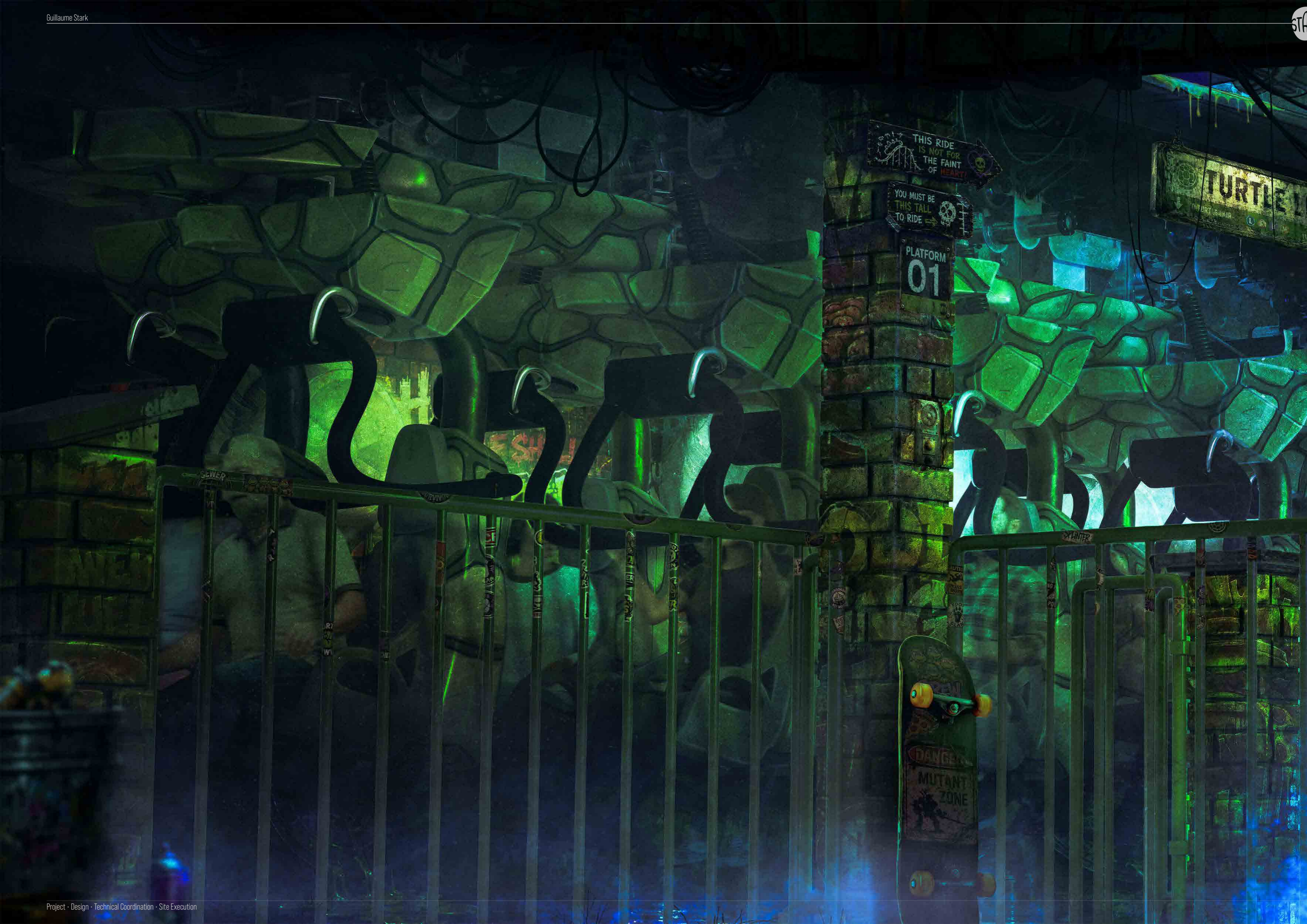


sewer_line_inspired_by_the_original_tmnt_films

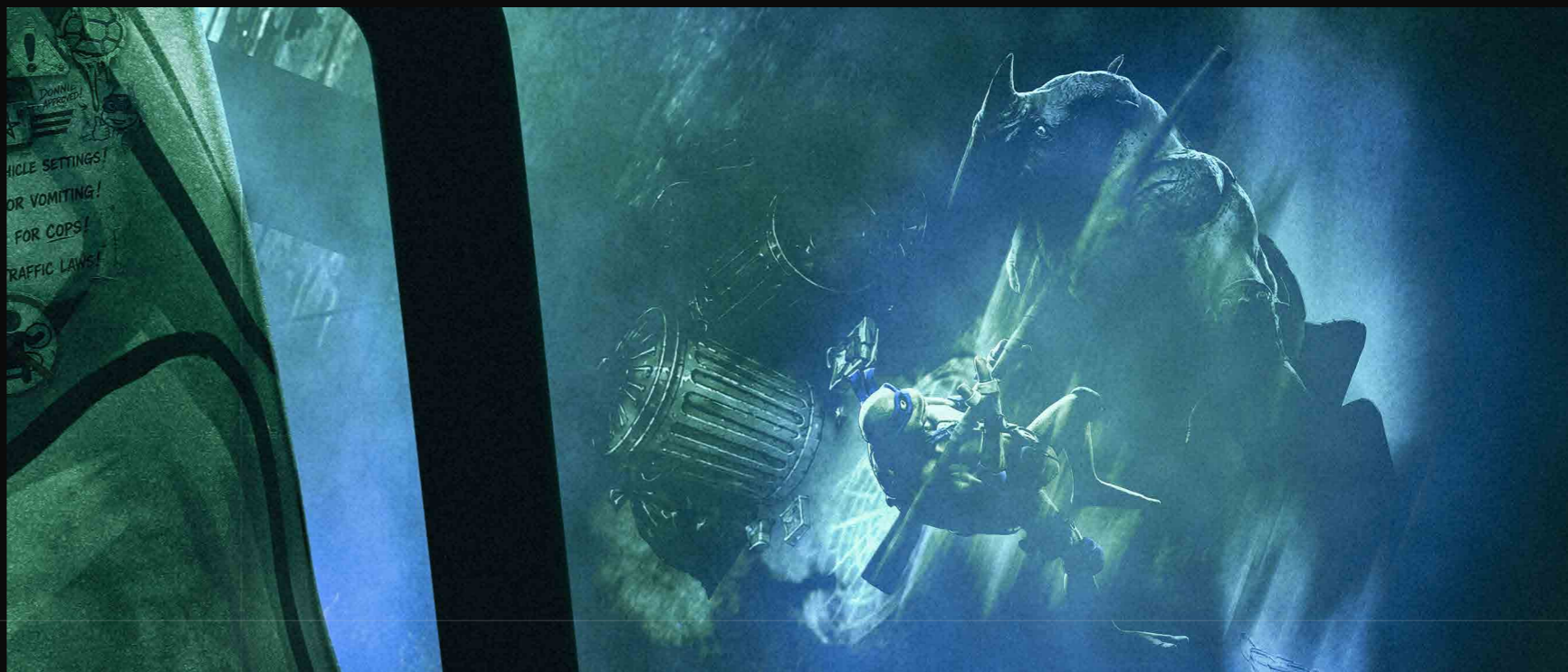
sewer_line is a fully immersive suspended dark ride inspired by the underground universe of the original tmnt films. blending dynamic ride motion, industrial scenic environments and cinematic lighting, the project reimagines the tmnt world as a large-scale themed entertainment experience.

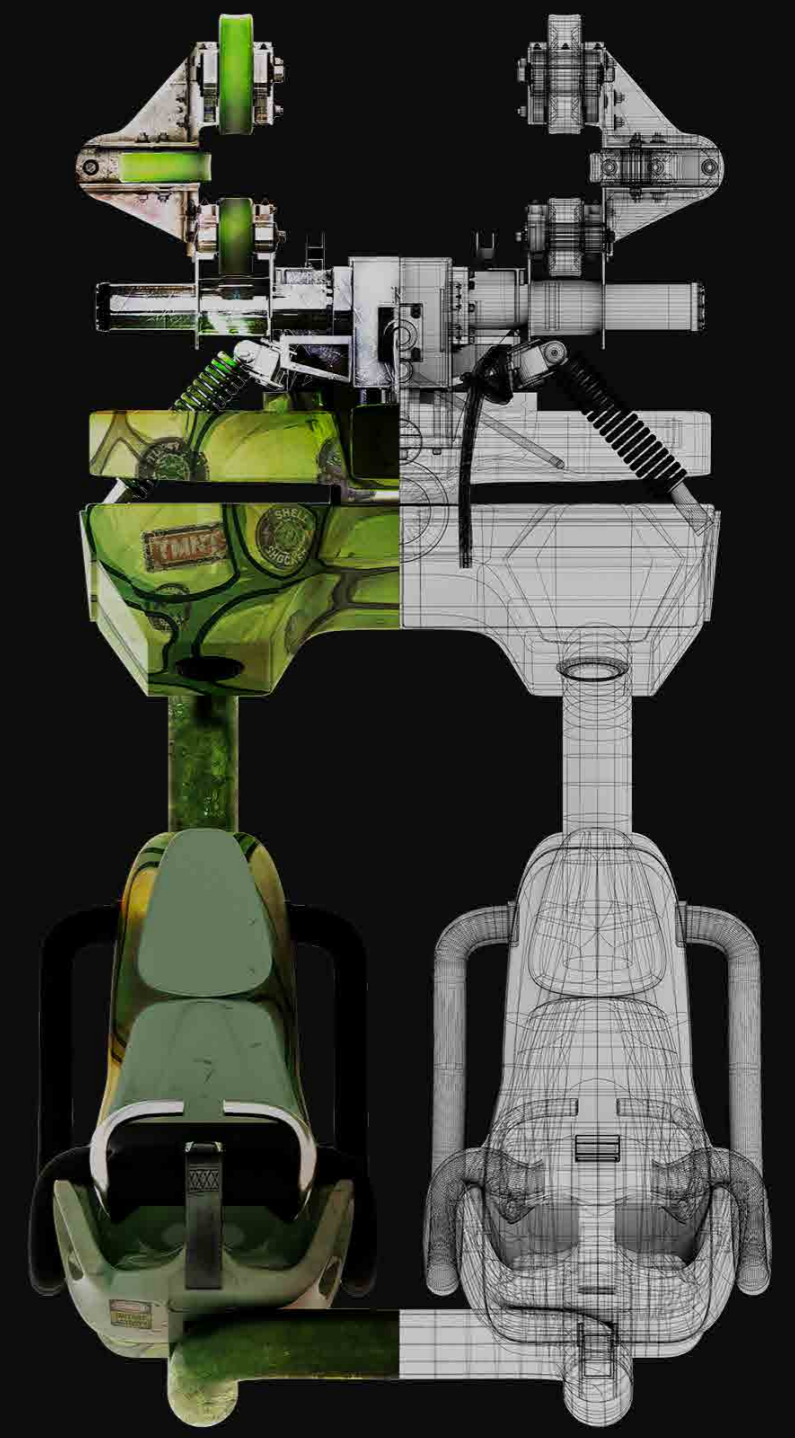
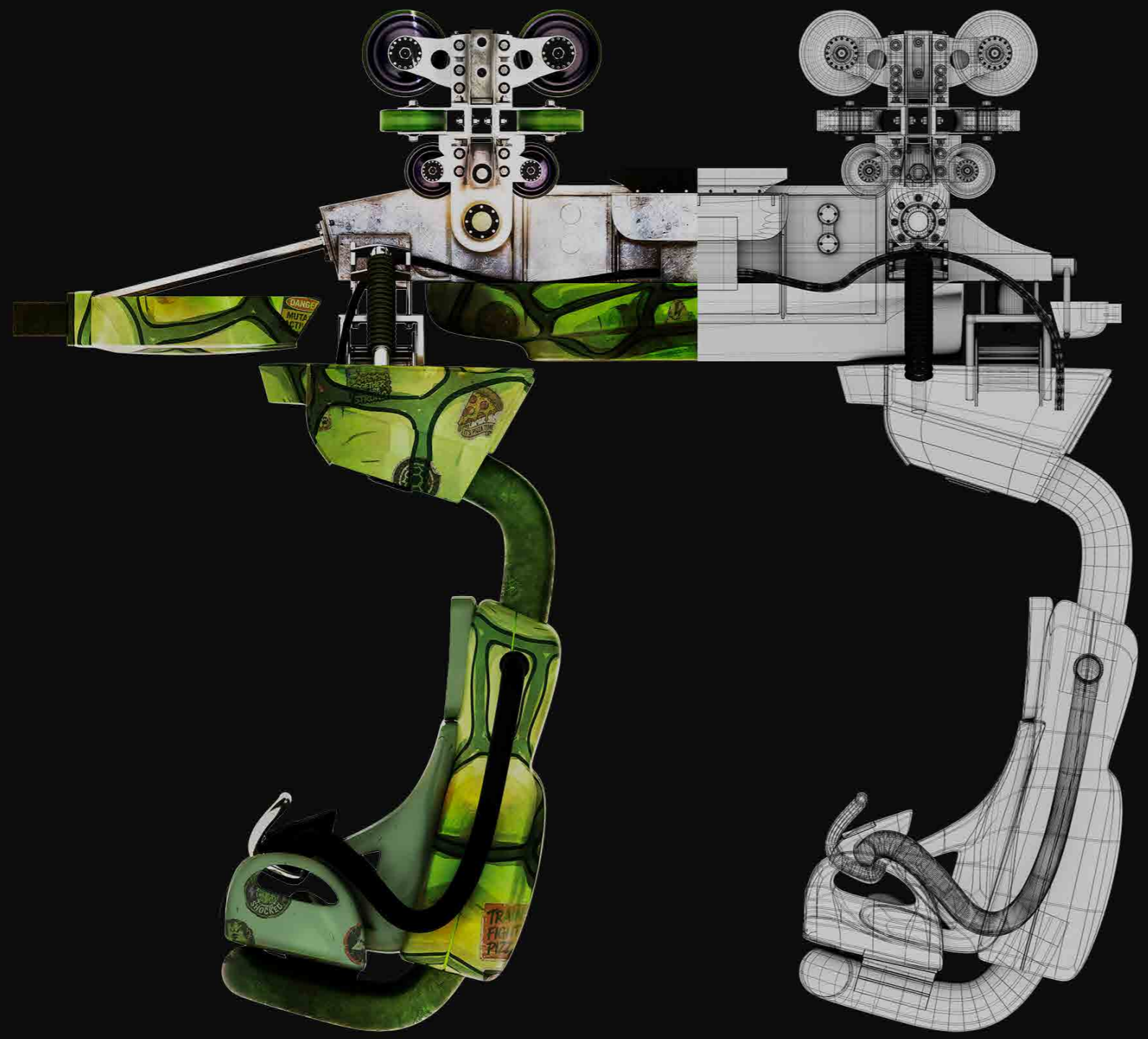


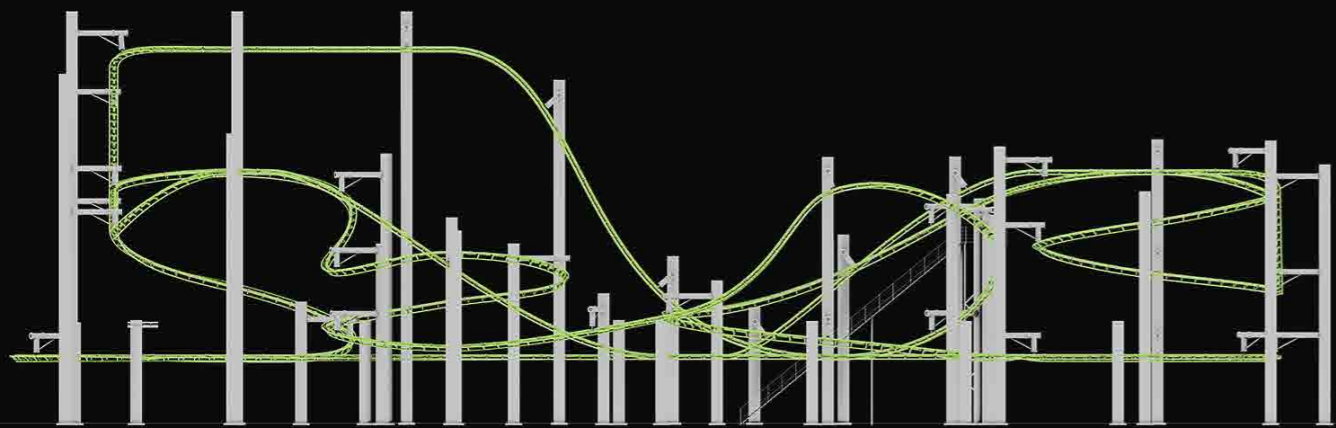














vehicle_theming_and_immersive_transformation

immersive_theming_also_relies_on_the_design_of_the_ride_vehicle_itself_beyond_transportation_the_vehicle_becomes_a_narrative_element_reinforcing_the_identity_atmosphere_and_emotional_experience_of_the_attraction_this_project_explores_the_thematic_transformation_of_an_ice_park_single_vehicle_into_a_fully_integrated_scenographic_element.









anne_marie_valmont_the_ghost_story_themed_restaurant

an immersive dining experience designed to blur the line between storytelling and hospitality, where architecture, scenography and atmosphere merge into a single narrative environment.











magic_bnb_immersive_disney_themed_apartment

originally designed as a fully immersive themed apartment, the project quickly attracted public attention and coverage from french media, featured on national television and recognized by guests as one of the most unique themed stays in france, the apartment demonstrates how storytelling, architecture and detail can transform a space into a destination.







BUZZ LIGHTYEAR BEDROOM
INTERACTIVE CHILDREN'S SPACE

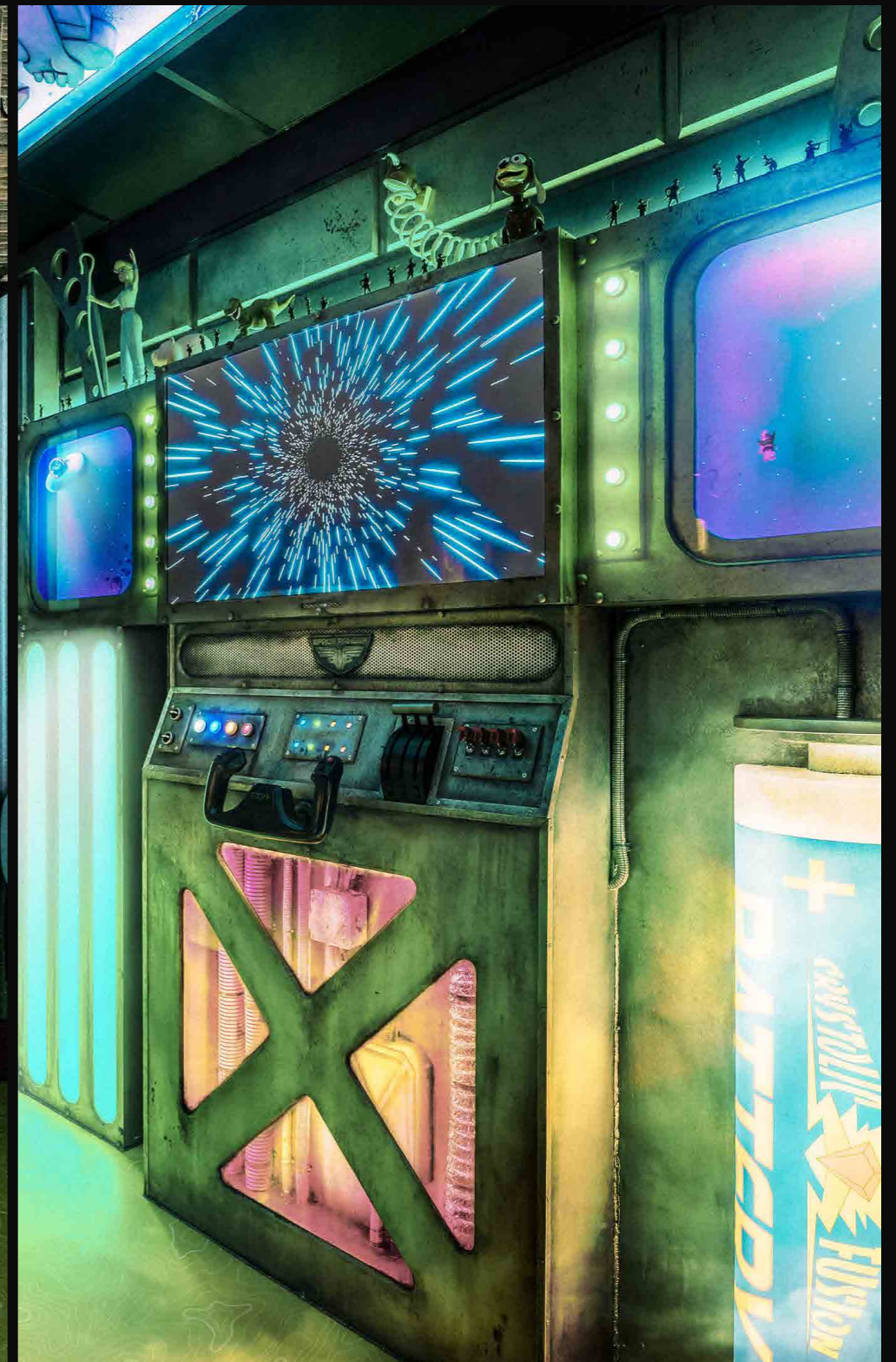


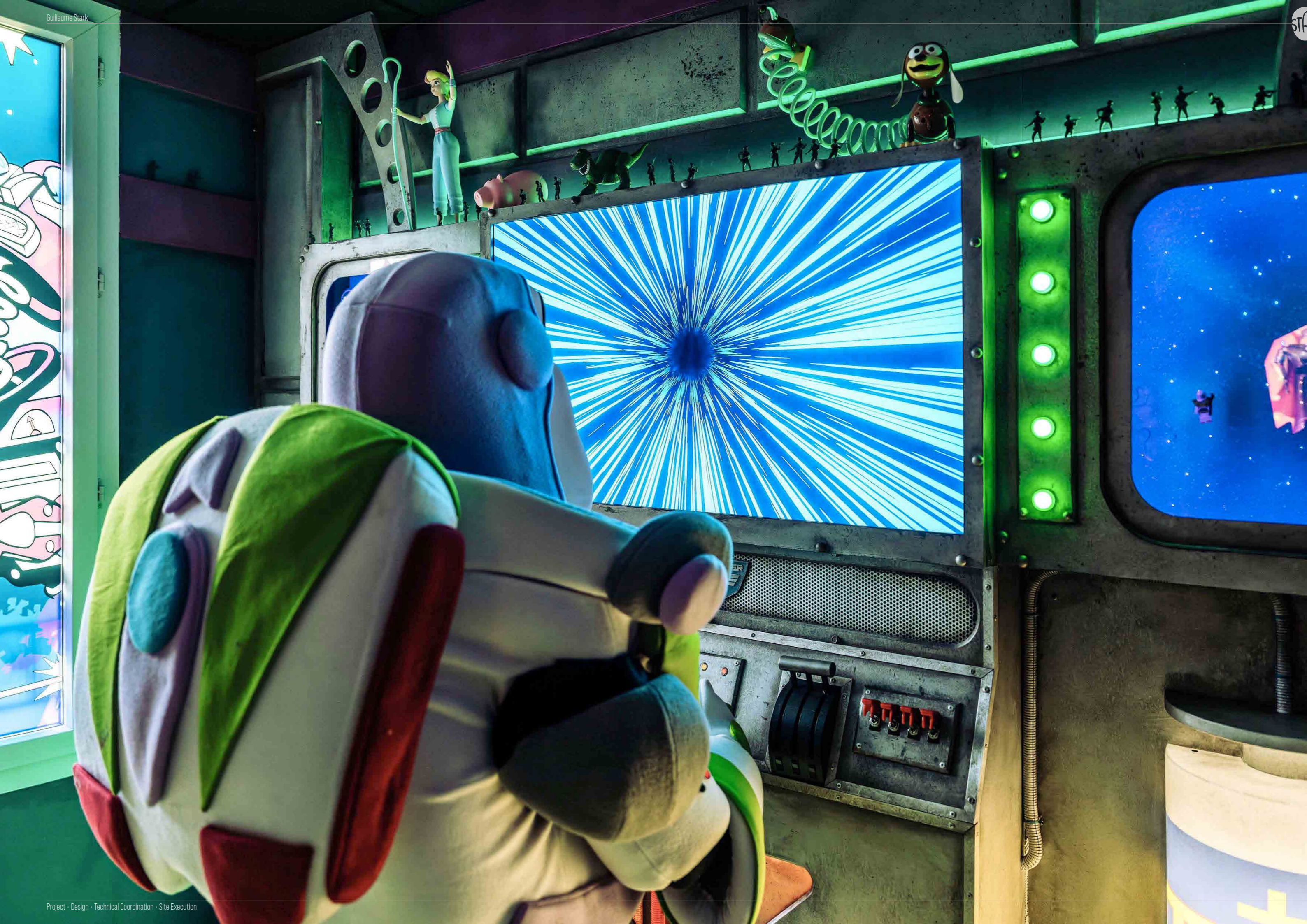
BEAST'S CASTLE BEDROOM
SIGNATURE MASTER SUITE

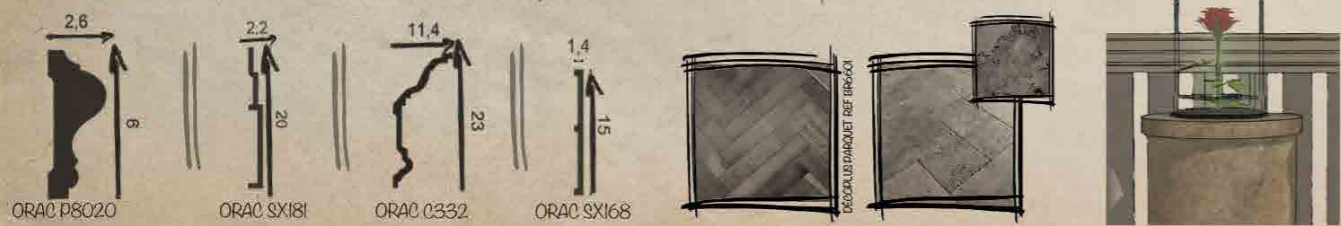
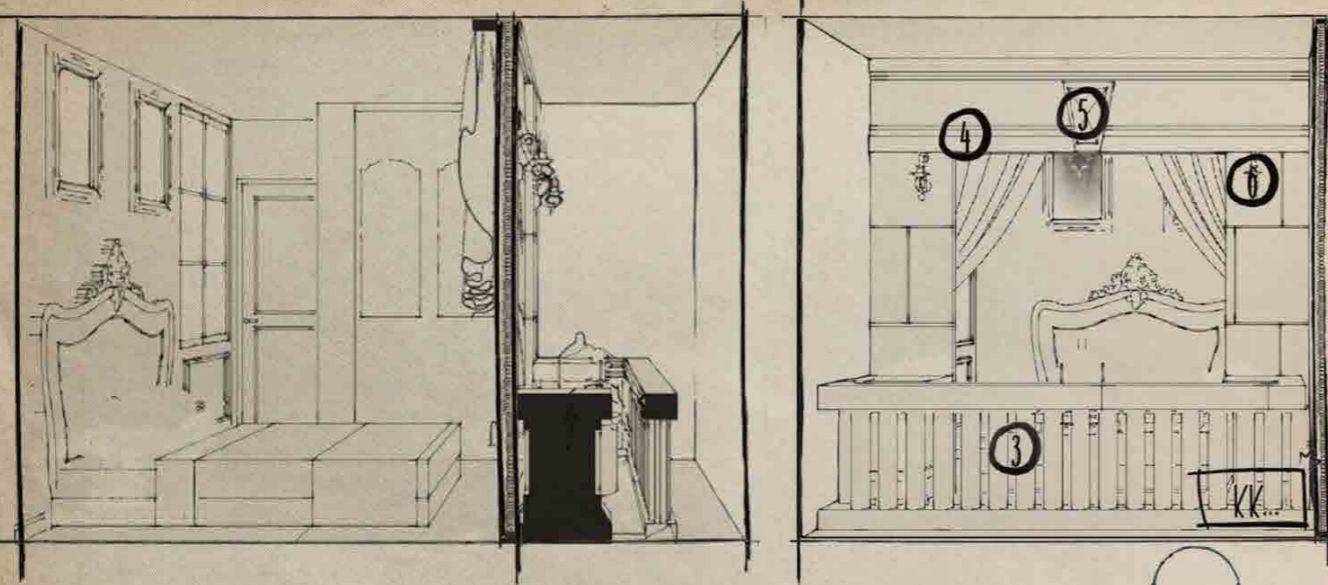
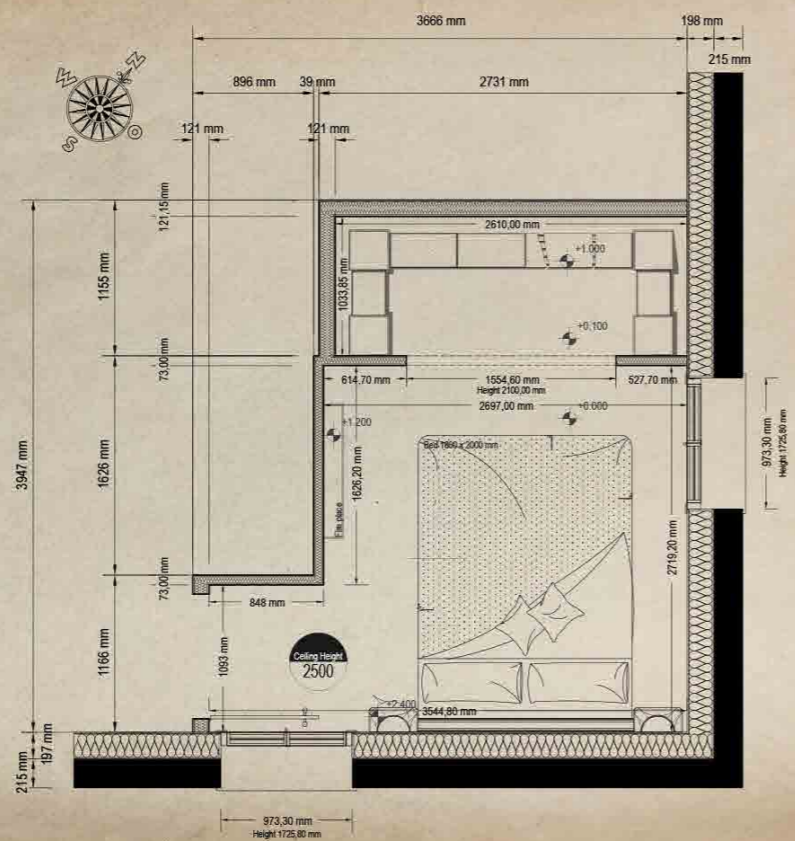


ARIEL UNDERWATER BATHROOM
IMMERSIVE THEMED ENVIRONMENT

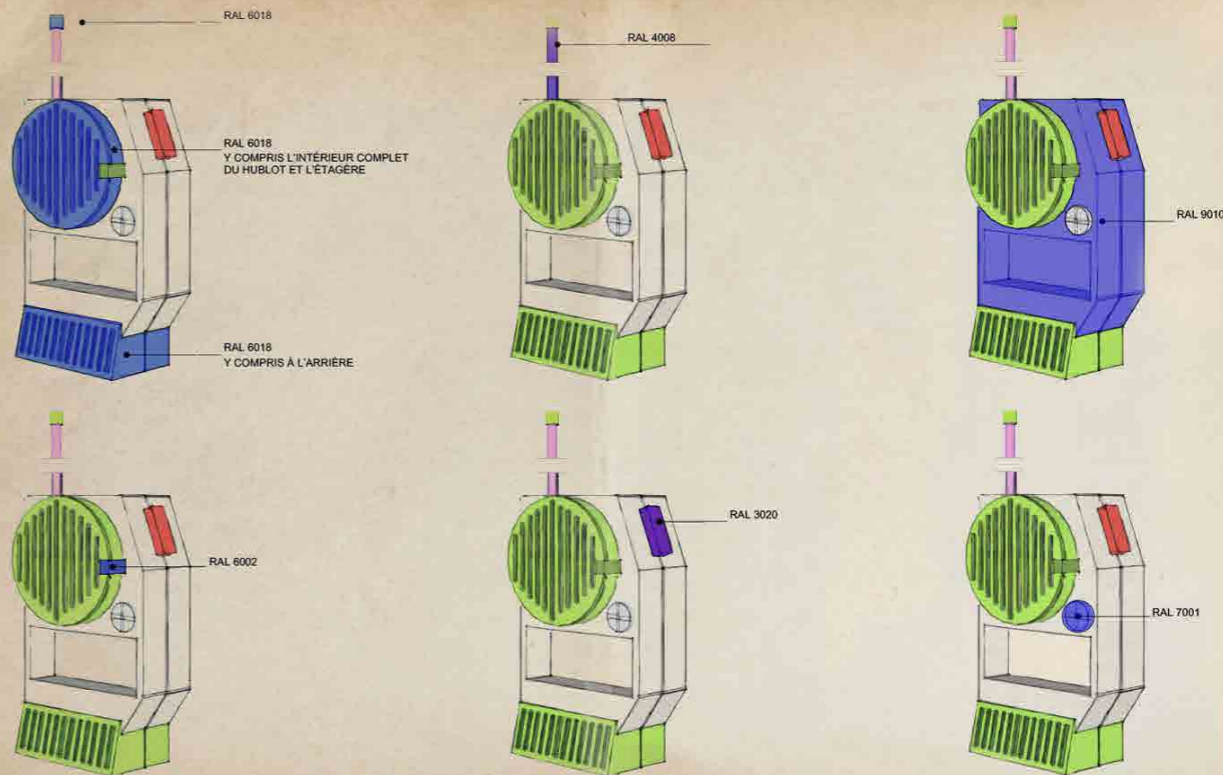




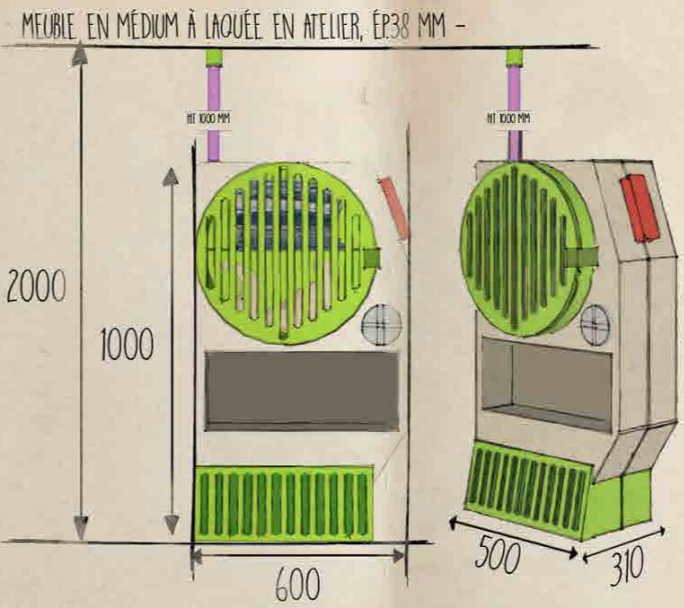




ORAC P8020 ORAC SX181 ORAC 0332 ORAC SX168



FANTASIA HOME #1	LAND	COMPLEXE	WORK ORDER	TITRE	MENUBRIÈRE INTÉRIEUR TEINTES	NUMERO ET REVISION DU CARNET	0001	PAGE	1/2	FOLIO	FICHER	ECH.	REV.
	BUZZ	0	MEUBLE DE RANGEMENT BUZZ LIGHTYEAR	N.C.							PL_MEUBLE_BUZZ_MENUH 0001 PDF	0/00	0/0



FANTASIA HOME #1	LAND	COMPLEXE	WORK ORDER	TITRE	MENUBRIÈRE INTÉRIEUR	NUMERO ET REVISION DU CARNET	0001	PAGE	1/2	FOLIO	FICHER	ECH.	REV.
	BUZZ	0	MEUBLE DE RANGEMENT BUZZ LIGHTYEAR	N.C.							PL_MEUBLE_BUZZ_MENUH 0001 PDF	0/00	0/0

A Guest Experience Proven by Real Families

T Thomas
France **B.**

A sentence would be too long :
Magnificent, magical and perfect!!!!

😊 The decor.

10

L Léa
France **B.**

Great location, very functional apartment, **magical** and ideal for immersing yourself in the **Disney universe**. Congratulations on this work.

😊 Great apartment, highly recommended.

10

L Laurianne
France **B.**

The decor is **fantastic. totally immersive**.
The location is great.

😊 The magic continues

10

E Emmanuelle
France **B.**

The decor is **absolutely incredible !!! Nothing to envy compared to the park's decor**. Nothing is left to chance, and everything is thought out down to the smallest details. **Total immersion !** Thank you.

😊 Exceptional

10

F Florian
France **B.**

An excellent place for an **immersive Disney themed stay** and very good customer service. I highly recommend it.

😊 An immersive Disney-themed place

10

T Tom
13 years on Airbnb

★★★★★

The styling is absolutely on point. Having stayed in Disney hotels all over the world **this BnB is up there with the best**. Your children (and the adults) will absolutely LOVE this place.

A Aaron
9 years on Airbnb

★★★★★

We stayed here for a family trip to Disneyland Paris and this themed place was amazing. The kids loved it and **the detail was impeccable**. I'd definitely recommend staying here instead of the Disney hotels.

M Martin
1 year on Airbnb

★★★★★

The most beautiful and **magical place** I have ever stayed in !
The décor was incredibly **accurate and detailed**.
Everything was perfect. I highly recommend this place don't hesitate to book it !

C Chrysostomos
8 years on Airbnb

★★★★★

Quite simply an **absolutely magical place** to stay in with our young family for our trip to Disneyland!
It is obvious that the owner has spent a substantial amount of time, effort and money to turn the flat into a high class, Disney-themed adventure, with **the attention to detail evident** at every corner. The photos on the listing are a true reflection of the magic that awaits once you are inside.

M Marta
Andorra la Vella, Andorra

★★★★★

It's a **spectacular apartment**, a Disney 10 decoration !!!
You have to see... much better than the hotels in Disneyland !
Everything was great !!
Thank you Guillaume

H Hades
France

★★★★★

Wonderful,
There are no other words !
Thank you for everything Guillaume !

C Cörlina
Noosa Heads, Australia

★★★★★

Better than any Disney hotel, you will find it. This is **the most incredible place** you could think of staying. **every square centimeter** has been taken care of to maximize your stay by feeling the magic of Disney in every room, and wherever you look. This host was the most friendly, welcoming, helpful, kind and generous we have ever known. The arrival was very easy because of all the photos to describe where to go and how to get there. This made our vacation perfect and we would like to be able to stay longer than we were very sad to leave, but very happy that we were able to discover **the magic of Disney's apartment**.
Thank you for making our vacation the most magical experience we have ever had.

S Sorraya
Épinay-sur-Seine, France

★★★★★

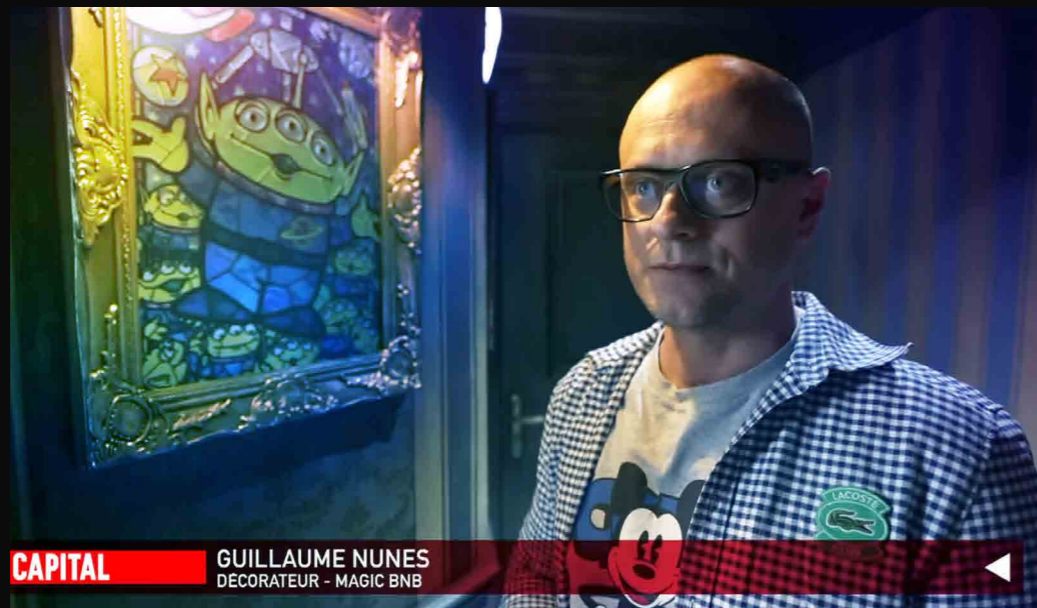
I had the opportunity to spend a short stay in this accommodation. The apartment itself is beautiful, a lot of detail and really exotic. A real plus so that **Disney's magic continues even once out of the park**.
Close my eyes I would recommend this accommodation.

A Adrien
Perpignan, France

★★★★★

Just «**wow**» !
Thank you Guillaume for this experience.
It's not just a housing but almost an «attraction».
In addition to that, it's super clean.
Everything in the details.
Next to everything.
I really recommend.
Thank you.

FEATURED ON NATIONAL TELEVISION IN THE PROGRAM CAPITAL M6, AIRED ON **JUNE 8, 2025**, REACHING AN AVERAGE AUDIENCE OF NEARLY **2 MILLION VIEWERS.**



ALSO FEATURED IN **MAISON CRÉATIVE** BROADCAST ON **FEBRUARY 12, 2026** AND HIGHLIGHTED ACROSS THEIR DIGITAL PLATFORMS REACHING OVER **170,000 FOLLOWERS.**

